



# COMMERCIAL-GRADE ACCESSORIES

2022 EDITION



ACCESSORIES

# DESIGNED, ENGINEERED, TESTED AND BACKED BY CHEVROLET.<sup>1</sup>



**On the Cover:**  
 2022 Silverado 1500 Short Bed Crew Cab with Hornet Light Bar from Putco<sup>2</sup>, Safety Rack by BACKRACK<sup>™3</sup>, Cross Bed Low-Profile Single Lid Aluminum Tool Box in Gloss Black Powder Coated Diamond Tread by UWS<sup>4</sup> and Crew Cab Work Step Assist Steps in Black.

2022 Silverado 1500 Short Bed Crew Cab shown with Complete Rack System Aluminum Ladder Rack and Cantilever by Thule<sup>5</sup>, Side-Mounting Aluminum Tool Box in Bright Diamond Tread by UWS<sup>4</sup> and 6-Inch Rectangular Assist Steps in Chrome. 2022 Express Cargo Van shown with Molded Assist Steps in Black.

Tough job to do? Chevrolet Accessories has you covered with a wide selection of commercial-grade choices that are completely in tune with the engineering and design standards of your vehicle. To help ensure you're getting the quality you deserve, many of these accessories have been put through a lineup of demanding tests. Chevrolet Accessories also offers customer-focused limited warranty coverage – if accessories are installed before vehicle delivery, they are covered under the applicable portion of the New Vehicle Limited Warranty<sup>6</sup>.

An additional offering of Associated Accessories is also available from renowned manufacturers like LUND<sup>7</sup>, Thule<sup>5</sup>, UWS<sup>4</sup>, CURT<sup>™</sup> and others – each with their own individual warranty coverage. See your Chevrolet Dealer or shop online at [chevrolet.com/accessories](http://chevrolet.com/accessories), which offers a convenient way to shop, select and ship thousands of choices.

GM reserves the right to make changes at any time, without notice, in prices, colors, materials, equipment, features, specifications, models, accessories and availability. Most Chevrolet Parts and Accessories sold and installed on a Chevrolet vehicle by a Chevrolet Dealer or a Chevrolet-approved Accessory Distributor/Installer (ADI) before delivery to the customer are covered under the applicable limited warranty. If Chevrolet Accessories are installed after vehicle delivery, or are replaced under the New Vehicle Limited Warranty, they will be covered, parts and labor, for the longer of the following: a) 12 months/12,000 miles (whichever comes first), or b) the balance of the applicable portion of the New Vehicle Limited Warranty. Chevrolet Parts sold over the counter, or those not requiring installation, will continue to receive the standard Chevrolet Dealer Parts Warranty of 12 months from the date of purchase, parts only, regardless of miles. Chevrolet warranties do not apply to Associated Accessories. See your dealer for details. <sup>1</sup> Vehicles shown with accessories from an independent supplier which are not warranted by GM or its dealers. GM is not responsible for the safety or quality of independent accessories. Any warranty is provided by the accessory manufacturer. This brochure shows many vehicles that have been altered or outfitted with equipment, bodies or components supplied to the Division or its dealers by independent suppliers. Division is not responsible for the safety or quality of design features, materials or workmanship of any alterations by any such supplier. Copyright 2022, General Motors. All rights reserved. All text and images in this catalog are subject to the copyright and other intellectual property rights of GM. These materials may not be reproduced, distributed, or modified without the express written permission of GM. The marks appearing in this catalog, including, but not limited to: (i) GM and the GM logo, (ii) Chevrolet and its respective logos, emblems, vehicle and part names, and (iii) other marks of third-party suppliers, are trademarks and/or service marks of GM, its subsidiaries, affiliates, or third-party supplier licensors. <sup>2</sup> Putco. <sup>3</sup> Associated Accessories are not tested by Chevrolet, or necessarily undergo the same third-party testing procedures as Chevrolet Accessories. <sup>4</sup> UWS. <sup>5</sup> Non-GM warranty. Limited warranty by BACKRACK<sup>™</sup> 3 years/36,000 miles (whichever occurs first). For more information, contact your dealer. <sup>6</sup> Non-GM warranty. Limited warranty by Putco<sup>2</sup> 3 years/36,000 miles (whichever occurs first). For more information, contact your dealer. <sup>7</sup> Non-GM warranty. Limited warranty by UWS<sup>4</sup>; 3 years. For more information, contact your dealer. Carrying capacities provided by UWS<sup>4</sup>. <sup>8</sup> When you purchase or lease a new Chevrolet vehicle, the entire vehicle is warranted for repairs, including parts and labor, to correct any defect in materials or workmanship, for 3 years or 36,000 miles, whichever comes first (except normal maintenance). <sup>9</sup> Non-GM warranty. Lifetime limited warranty by Thule<sup>5</sup>. For more information, contact your dealer. <sup>10</sup> Associated Accessory. Non-GM part. Pictured gear and supplies not included. See dealer for details.

## TABLE OF CONTENTS:

2022 Express Van .....	4
Trailer Hitches, Mounts and Auxiliary Camera .....	6
Assist Steps .....	8
Tool Boxes .....	10
Utility Racks .....	12
Hard Tonneau Covers .....	14
Soft Tonneau Covers .....	16
Premium All-Weather Floor Liners .....	17
Cargo Management .....	18
Bed Protection .....	20
Additional Accessories .....	22
Silverado Chassis Cabs .....	26
Business Choice .....	28

**EXPRESS VAN**

**READY TO WORK.**



Turn your Chevrolet Express Van into a mobile workspace with offerings from Chevrolet Accessories. They're designed to enhance organization, convenience and productivity.

1

**1. Shelving and Storage Solutions by Westcan<sup>1</sup>**

Organize your tools, equipment and supplies with these accessories. The notched-out end panels allow for 48-inch-wide flat sheets to be carried at floor level. Each shelf is rated up to 120 lbs., or a maximum total of 360 lbs. per shelving unit.

**2. Fold-Up Shelving Package with Partition by Westcan<sup>1,2</sup>**

These fold-up shelving packages feature a lightweight 2-shelf aluminum tandem shelving unit on the driver side and a 2-shelf unit on the passenger side. These can simply fold up to make way for larger cargo or fold down for placement of small parcels. Each shelf is rated at 55 lbs. per linear foot, or a maximum total of 250 lbs. per shelf.

**3. Molded Assist Steps in Black**

Getting in and out of Express is simplified with these 6-Inch Oval Assist Steps. They feature slip-resistant treads on the top surface.

**4. Front and Rear Splash Guards**

Help protect your vehicle from tire splash and mud with Front and Rear Splash Guards. They are sold in sets of two for the front or rear wheels.

**5. First-Row Premium All-Weather Floor Mats<sup>2</sup>**

Help keep rain, mud, snow and other debris from your vehicle's carpet with Premium All-Weather Floor Mats. Set of two.

**6. Security Screen Package – Rear or Side Door Window**

Help keep cargo and tools protected with this Rear or Side Door Window Security Screen Package. Individual applications are available for side door driver-/passenger-side split windows or sliding windows and both rear windows.

**2022 EXPRESS VAN**

	PRODUCT	VEHICLE	PART #	MSRP <sup>3</sup>
	Premium Package by Westcan <sup>1</sup> Driver/Passenger Shelving Units and Perforated Swing Door Partition	Express 2500/3500 Regular Wheelbase Cargo Vans	19419012	\$1,908
	Trade Package by Westcan <sup>1</sup> Driver/Passenger Shelving Units and Perforated Swing Door Partition		19419014	\$1,497
	10.5-inch Shelving Dividers by Westcan <sup>1,2</sup> (5 per pack)		19419005	\$43
	Perforated Swing Door Partition by Westcan <sup>1</sup>		19419004	\$572
	14-inch Shelving Dividers by Westcan <sup>1,2</sup> (5 per pack)		19419006	\$45
	Garment Locker by Westcan <sup>1,2</sup>	Express 2500/3500 Regular/Extended Wheelbase Cargo Vans	19419007	\$386
	2-Place In-Shelf Tote Holder by Westcan <sup>1,2</sup> (includes 2 totes)		19419008	\$194
	3-Place Freon Tank Holder by Westcan <sup>1,2</sup>		19419009	\$375
	Cylinder Mount, Fits 6"-10" Cylinders by Westcan <sup>1,2</sup>		19419010	\$52
	Single Hook with 4.5" Opening by Westcan <sup>1,2</sup>		19419011	\$34
1	Premium Package by Westcan <sup>1</sup> Driver/Passenger Shelving Units and Perforated Swing Door Partition	Express 2500/3500 Extended Wheelbase Cargo Vans	19419013	\$1,977
	Trade Package by Westcan <sup>1</sup> Driver/Passenger Shelving Units and Perforated Swing Door Partition		19419015	\$1,874
	3-Shelf Unit by Westcan <sup>1,2</sup> 38"L x 14"D x 46"H		19432094	\$412
	3-Shelf Unit by Westcan <sup>1,2</sup> 48"L x 14"D x 46"H		19432095	\$446
	3-Shelf Unit by Westcan <sup>1,2</sup> 59.5"L x 14"D x 46"H	Express 2500/3500 Regular/Extended Wheelbase Cargo Vans	19432096	\$480
	Single Shelf by Westcan <sup>1,2</sup> 38"L x 14"D x 2.5"H		19432097	\$91
	Single Shelf by Westcan <sup>1,2</sup> 48"L x 14"D x 2.5"H		19432098	\$102
	Single Shelf by Westcan <sup>1,2</sup> 59.5"L x 14"D x 2.5"H		19432099	\$113
2	Fold-Up Shelving Package with Partition by Westcan <sup>1,2</sup> Driver/Passenger Shelving Units and Perforated Swing Door Partition	Express 2500/3500 Regular Wheelbase Passenger/Cargo Vans	19419801	\$3,405
		Express 2500/3500 Extended Wheelbase Passenger/Cargo Vans	19419802	\$3,511
3	Molded Assist Steps in Black	Express 2500/3500 Cargo Vans	22889278	\$495
4	Front Splash Guards in Black <sup>2</sup>	Express 2500/3500 Passenger/Cargo Vans	12496340	\$55
	Rear Splash Guards in Black		12496341	
5	First-Row Premium All-Weather Floor Mats in Black <sup>2</sup>	Express 2500/3500 Passenger/Cargo Vans	84281891	\$145
6	Security Screen Package – Rear or Side Door Window (Rear Door Window – Includes Left- and Right-Hand Window Screens and Hardware Kit)		12498715	
	Security Screen Package – Rear or Side Door Window (Side Door Window – For Use on Sliding Window) <sup>2</sup>	Express 2500/3500 Cargo Vans	12498712	\$145
	Security Screen Package – Driver-Side, Split Door Window <sup>2</sup>		12498714	
	Security Screen Package – Passenger-Side, Split Door Window <sup>2</sup>		12498713	



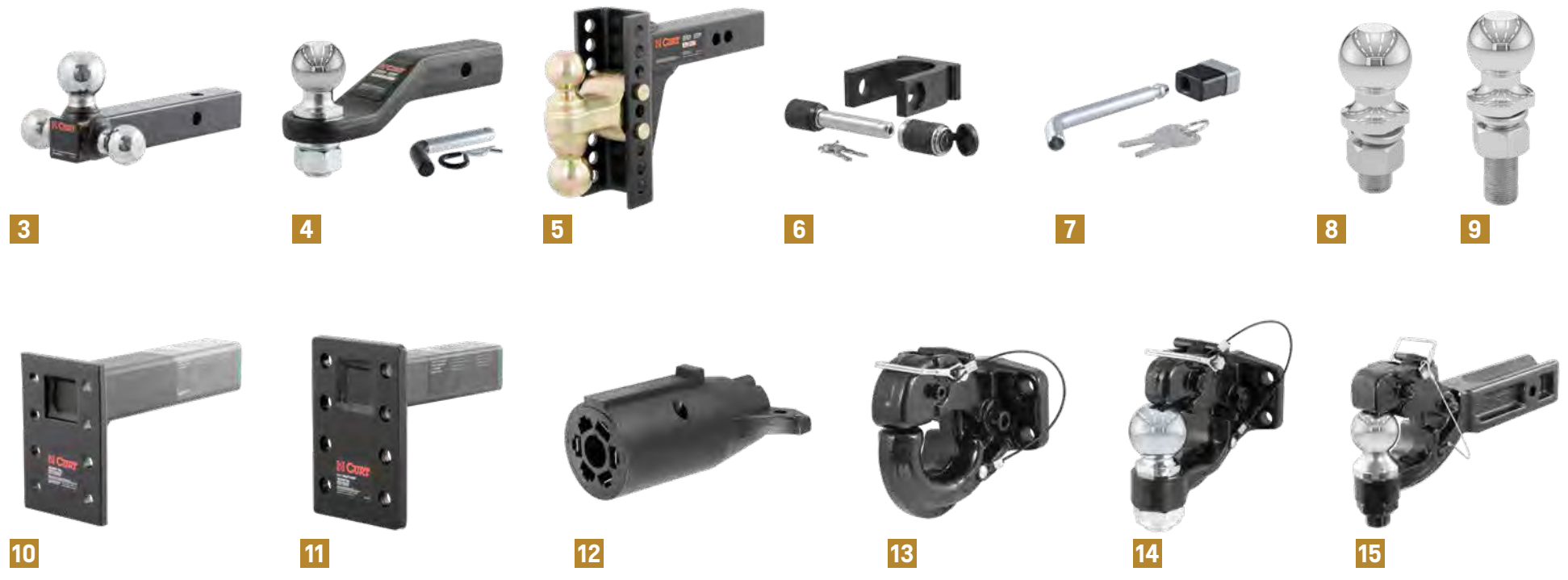
<sup>1</sup> Non-GM warranty. Limited warranty by Westcan, 3 years/36,000 miles (whichever occurs first). For more information, contact your dealer. <sup>2</sup> Not pictured. <sup>3</sup> Manufacturer's Suggested Retail Price. Tax and installation extra. See dealer for details. <sup>4</sup> Associated Accessory. Non-GM part. Pictured gear and supplies not included. See dealer for details.

**TRAILERING**

**LEAVE NOTHING BEHIND.**



Chevrolet Accessories offers a variety of items designed to help you haul with confidence and get the job done.



**2022 SILVERADO**

	PRODUCT	PART #	MSRP <sup>1</sup>
1	Trailer Hookup Assist <sup>2</sup>	84363181	\$75
2	5th Wheel Hitch by CURT™ Group <sup>3,4,5</sup> (30K lbs. GTW)	19418636	\$1,489
3	Tri-Ball Mount with Solid Shank, 3-Size Ball Mount (2" Receiver) by CURT™ Group <sup>3,5</sup> (10K lbs. GTW)	19366949	\$150
4	Forged/Loaded Ball Mount by CURT™ Group <sup>3,5</sup> (15K lbs. GTW/1.5K lbs. GTW)	19366946	\$99
5	Adjustable Channel Mount for 2" Receiver, w/2" and 2 1/4" Trailer Balls by CURT™ Group <sup>3,5</sup> (14K lbs. GTW)	19366948	\$199
6	5th Wheel King Pin Lock by CURT™ Group <sup>3,5</sup>	19366959	\$61
7	Trailer Hitch Receiver Lock by CURT™ Group <sup>3,5</sup>	19366961	\$27
8	Accessory Tow Ball – Trailer Hitch w/2 1/4" Ball; 2 1/4"-Thick Flange by CURT™ Group <sup>3,5</sup> (20K lbs. GTW)	19367005	\$34
9	Accessory Tow Ball – Trailer Hitch w/ 1 1/4" Ball; 1"-Thick Flange by CURT™ Group <sup>3,5</sup> (3.5K lbs. GTW)	19367004	\$20
10	Adjustable Pintle Mount w/2" Shank by CURT™ Group <sup>3,5</sup> (10K lbs. GTW)	19367137	\$97
11	Adjustable Pintle Mount w/2 1/2" Shank by CURT™ Group <sup>3,5</sup> (18K lbs. GTW)	19367136	\$196
12	7-Way Blade to 4-Pin Flat Trailer Wiring Electrical Adapter by CURT™ Group <sup>5</sup>	19366958	\$12
13	Pintle Hook (Recommended w/19367136 or 19367137) by CURT™ Group <sup>3,5</sup> (20K lbs. GTW)	19367141	\$129
14	Pintle Hook and Ball Combination w/2" Ball (Recommended w/19367136 or 19367137) by CURT™ Group <sup>3,5</sup> (16K lbs. GTW)	19367142	\$178
15	Receiver Mount Ball and Pintle Combination w/Solid Shank; Features Changeable 2 1/4" Pintle Ball by CURT™ Group <sup>3,5</sup> (20K lbs. GTW)	19367140	\$200

	PRODUCT	PART #	MSRP <sup>1</sup>
	Trailer Camera System <sup>6</sup>	85004154	\$475
	2 1/4" Gooseneck Trailer Hitch <sup>4,6,7</sup> (38K lbs. GTW)	84759852	\$295
	2 1/4" Gooseneck Trailer Hitch with Under Bed Brackets and Hardware by CURT™ Group <sup>3,4,5,6</sup> (32.5K lbs. GTW)	19419344	\$815
	A25 5th Wheel Hitch by CURT™ Group <sup>3,4,5,6</sup> (25K lbs. GTW)	19418686	\$1,195
	A20 5th Wheel Hitch by CURT™ Group <sup>3,4,5,6</sup> (20K lbs. GTW)	19418687	\$1,135
	Accessory Tow Ball – Trailer Hitch w/1 1/4" Ball; 1"-Thick Flange and 1" Shank by CURT™ Group <sup>3,5,6</sup> (2K lbs. GTW)	19367003	\$18
	Accessory Tow Ball – Trailer Hitch w/2" Ball; 1"-Thick Flange and 1" Shank by CURT™ Group <sup>3,5,6</sup> (7.5K lbs. GTW)	19367006	\$19
	Receiver Mount Pintle Hitch w/2" Solid Shank by CURT™ Group <sup>3,5,6</sup> (20K lbs. GTW)	19367138	\$132
	Receiver Mount Ball and Pintle Combination w/2" Solid Shank; Features Changeable 2" Pintle Ball by CURT™ Group <sup>3,5,6</sup> (16K lbs. GTW)	19367139	\$180
	Pintle Hook and Ball Combination w/2 1/4" Ball (Recommended w/19367136 or 19367137) by CURT™ Group <sup>3,5,6</sup> (16K lbs. GTW)	19367143	\$179
	Hollow Shank Dual Length Ball Mount w/2" Receiver; 2" Drop by CURT™ Group <sup>3,5,6</sup> (7.5K lbs. GTW)	19366939	\$57
	Hollow Shank Single Length Ball Mount w/2" Receiver; 2" Drop by CURT™ Group <sup>3,5,6</sup> (7.5K lbs. GTW)	19366940	\$30
	Hollow Shank Ball Mount w/2" Receiver; 4" Drop by CURT™ Group <sup>3,5,6</sup> (7.5K lbs. GTW)	19366941	\$30
	Hitch Ball Mount w/2" Preloaded Ball; 2" Receiver and 2" Drop by CURT™ Group <sup>3,5,6</sup> (7.5K lbs. GTW)	19366943	\$48
	Hitch Ball Mount w/2" Preloaded Ball; 2" Receiver and 4" Drop by CURT™ Group <sup>3,5,6</sup> (7.5K lbs. GTW)	19366944	\$49
	Hollow Shank Ball Mount w/2" Welded Ball; 2" Receiver and 2" Drop by CURT™ Group <sup>3,5,6</sup> (7.5K lbs. GTW)	19366945	\$47
	Hollow Shank Ball Mount w/2" Welded Ball; 2" Receiver and 4" Drop by CURT™ Group <sup>3,5,6</sup> (7.5K lbs. GTW)	19366950	\$49
	Adjustable Ball Mount w/2" Receiver; Max 7 1/2" Drop by CURT™ Group <sup>3,5,6</sup> (5K lbs. GTW)	19366951	\$140
	Hitch and Coupler Lock Set (Chrome 1/4" Hitch Lock; 1/4" Coupler Lock – 2 1/2" Span) by CURT™ Group <sup>3,5,6</sup>	19366962	\$56
	Hollow Shank Ball Mount w/2" Receiver; 6" Drop by CURT™ Group <sup>3,5,6</sup> (7.5K lbs. GTW)	19366942	\$47
	Intellihaul 2.0 Trailing Camera System (2019-2022 Silverado 1500) <sup>8</sup>	19421450	\$1,199
	Intellihaul 2.0 Trailing Camera System (2020-2022 Silverado HD) <sup>8</sup>	19421451	\$1,199
	Add-On Front Camera for Intellihaul 2.0 Systems (2019-2022 Silverado 1500 and 2020-2022 Silverado HD) <sup>8</sup>	19421452	\$150
	Add-On Wireless Trailer Camera for Intellihaul 2.0 Systems (2019-2022 Silverado 1500 and 2020-2022 Silverado HD) <sup>8</sup>	19421453	\$408



GTW = Gross Trailer Weight

<sup>1</sup> Manufacturer's Suggested Retail Price. Tax and installation extra. See dealer for details. <sup>2</sup> 2019-2022 Chevrolet Silverado 1500 models only. Read the vehicle Owner's Manual for important feature limitations and information. <sup>3</sup> Before you buy a vehicle or use it for trailering, carefully review the Trailering section of the Owner's Manual. The weight of passengers, cargo and options or accessories may reduce the amount you can tow. <sup>4</sup> 2020-2022 Chevrolet Silverado HD models only. <sup>5</sup> Non-GM warranty. Limited lifetime warranty by CURT™ Group. A Series 5th Wheel Hitch, Trailer Hitches and Ball Mounts, Trailer Couplers, Locks, Wiring and Electrical. For more information, contact your dealer. <sup>6</sup> Not pictured. <sup>7</sup> 2016-2022 Chevrolet Silverado HD models only. <sup>8</sup> Associated Accessory. Non-GM part.

**ASSIST STEPS**

**STEP UP YOUR GAME.**



Make it easier to get in and out of your truck and gain easy access to your bed- or front-mounted Tool Boxes with Assist Steps from Chevrolet Accessories.



**2022 SILVERADO 1500**

	PRODUCT	CAB TYPE	BED SIZE	COLOR	PART #	MSRP <sup>1</sup>
1	6-Inch Rectangular Wheel-to-Wheel Assist Steps (Set of 2)	Double	Standard	Chrome	84132800	\$890
		Crew	Short		84016709	
		Crew	Standard		84016710	
		Double	Standard	Black	84132801	
		Crew	Short		84126245	
		Crew	Standard		84126246	
2	4-Inch Round Assist Steps (Set of 2)	Regular	Long	Chrome	84011362	\$655
		Double	Standard		84011359	\$785
		Crew	Short or Standard	Black	84011356	\$785
		Regular	Long		84011361	\$655
		Double	Standard		84011358	\$785
		Crew	Short or Standard		84011355	\$785
3	6-Inch Rectangular Assist Steps (Set of 2)	Regular	Long	Chrome	84011399	\$655
		Double	Standard		84011396	\$785
		Crew	Short or Standard	Black	84676693	\$785
		Regular	Long		84011398	\$655
		Double	Standard		84011395	\$785
		Crew	Short or Standard		84676694	\$785
4	Work Assist Steps (Set of 2)	Regular	Long	Black	84081714	\$415
		Double	Standard		84017115	\$445
		Crew	Short or Standard		84017116	\$445
5	Retractable Bed Step by LUND <sup>2</sup>	N/A	Short	Black	19417392	\$289
		N/A	Standard or Long		19417393	
6	Sport Step Assist Steps with Silverado Script <sup>3</sup> (Set of 2)	Crew	Short or Standard	Black	84742421	\$1,040

**2022 SILVERADO HD**

	PRODUCT	CAB TYPE	BED SIZE	COLOR	PART #	MSRP <sup>1</sup>
2	4-Inch Round Assist Steps (Set of 2)	Regular	Long	Chrome	84208268	\$655
		Double	Standard or Long		84208265	\$785
		Crew	Standard or Long		84208262	\$785
		Regular	Long	Black	84208267	\$655
		Double	Standard or Long		84208264	\$785
		Crew	Standard or Long		84208261	\$785
3	6-Inch Rectangular Assist Steps (Set of 2)	Regular	Long	Chrome	84212741	\$655
		Double	Standard or Long		84212738	\$785
		Crew	Standard or Long	Black	84676712	\$785
		Regular	Long		84212742	\$655
		Double	Standard or Long		84212739	\$785
		Crew	Standard or Long		84676713	\$785
4	Work Assist Steps (Set of 2)	Regular	Long	Black	84388997	\$415
		Double	Standard or Long		84388998	\$445
		Crew	Standard or Long		84388999	\$445
6	Sport Step Assist Steps with Silverado Script <sup>3</sup> (Set of 2)	Double	Standard or Long	Black	84742431	\$995
		Crew	Standard		84742421	\$1,040

**2022 COLORADO**

	PRODUCT	CAB TYPE	BED SIZE	COLOR	PART #	MSRP <sup>1</sup>
7	5-Inch Rectangular Assist Steps (Set of 2)	Extended	Long	Chrome	84157162	\$725
		Crew	Short or Long		84157153	
		Extended	Long	Black	84157165	\$680
		Crew	Short or Long		84157156	

<sup>1</sup> Manufacturer's Suggested Retail Price. Tax and installation extra. See dealer for details. <sup>2</sup> Non-GM warranty. Limited warranty by LUND<sup>®</sup>, 3 years/36,000 miles (whichever occurs first). For more information, contact your dealer. <sup>3</sup> Not pictured. <sup>4</sup> - Associated Accessory. Non-GM part. Pictured gear and supplies not included. See dealer for details.

## TOOL BOXES

# BUILT TO HANDLE THE JOB.



If you have tools, we have the Tool Boxes to keep them organized and secure. They are available in a wide variety of sizes and styles, certain to accommodate nearly any need.



- 1. Single-Lid Crossover Tool Box with Pull Handles by UWS<sup>®1</sup>**  
Features two built-in trays, screwdriver holders and a three-compartment sliding tray for convenient small-item storage.



- 2. Secure Lock Crossover Tool Box with Twist Handles by UWS<sup>®1</sup>**  
Easy-to-open powder coated twist handles provide strength, security and long-term corrosion resistance.



- 3. Secure Lock Crossover Tool Box with Twist Handles and Rails by UWS<sup>®1</sup>**  
Features a stylish lid perimeter rail with multiple anchor points.



- 4. Single-Lid Deep-Well Tool Box by UWS<sup>®1</sup>**  
The Deep-Well Tool Box delivers 12.4 cu. ft. of storage volume.



- 5. Gullwing Tool Box by UWS<sup>®1</sup>**  
Combine convenience and security with easy access to either end of the box.



- 8. Side Mount Tool Box by UWS<sup>®1</sup>**  
Available in 48- and 60-inch lengths, delivering 3.0 and 3.7 cu. ft. of tool storage volume, respectively.



- 9. Rhino Linings<sup>®</sup> Steel Tool Box by LUND<sup>®2</sup>**  
Incorporates a polyurethane coating that delivers super toughness with excellent impact and corrosion resistance.



- 10. Swing-Out Tool Box by UnderCover<sup>™3</sup>**  
Mounts behind the rear wheelhousing on either side of the truck bed and swings toward the rear for easy access to your gear.



- 6. Low-Profile Tool Box by UWS<sup>®1</sup>**  
The sleek design delivers enhanced rearward view.



- 7. Single-Door Topsider Tool Box by UWS<sup>®1</sup>**  
Available in a one- or two-door version and mounts to the bed rails for added convenience.

### 2022 SILVERADO 1500 AND 2022 SILVERADO HD

	PRODUCT	DESCRIPTION	VOLUME	DIMENSIONS	PART #	MSRP <sup>4</sup>
1	Single-Lid Crossover Tool Box with Pull Handles by UWS <sup>®1</sup>	Bright Chrome	8.4 cu. ft.	69.88" L x 20" W x 14.75" H	19370597	\$555
		Matte Black <sup>5</sup>			19370598	\$650
		Gloss Black <sup>5</sup>			19370599	\$650
2	Secure Lock Crossover Tool Box with Twist Handles by UWS <sup>®1</sup>	Bright Chrome	8.4 cu. ft.	69.88" L x 20" W x 14.75" H	19370593	\$611
		Matte Black <sup>5</sup>			19370595	\$725
		Gloss Black <sup>5</sup>			19419258	\$724
3	Secure Lock Crossover Tool Box with Twist Handles and Rails by UWS <sup>®1</sup>	Bright Chrome (with Rails)	8.4 cu. ft.	69.88" L x 20" W x 14.75" H	19370594	\$655
		Matte Black (with Rails) <sup>5</sup>			19370596	\$725
		Gloss Black (with Rails) <sup>5</sup>			19419222	\$722
4	Single-Lid Deep-Well Tool Box by UWS <sup>®1</sup>	Bright Chrome	12.4 cu. ft.	69.88" L x 20" W x 20.75" H	19299117	\$575
5	Gullwing Tool Box by UWS <sup>®1</sup>	Bright Chrome	8.4 cu. ft.	69.88" L x 20" W x 16.5" H	19260344	\$517
		Gullwing Deep-Well Tool Box by UWS <sup>®1</sup>	Bright Chrome <sup>5</sup>	12.5 cu. ft.	69.88" L x 20" W x 19.5" H	19366642
6	Low-Profile Tool Box by UWS <sup>®1</sup>	Bright Chrome	8.4 cu. ft.	69.8" L x 20" W x 20.75" H	19302652	\$510
		Matte Black <sup>5</sup>			19329974	\$607
		Gloss Black <sup>5</sup>			19303349	\$607
7	Single-Door Topsider Tool Box by UWS <sup>®1</sup>	Bright Chrome	6.3 cu. ft.	48" L x 13.63" W x 17" H	19370587	\$562
		Gloss Black <sup>5</sup>	19370588	\$665		
		Bright Chrome <sup>5</sup>	7.8 cu. ft.	60" L x 13.63" W x 17" H	19370589	\$657
	Two-Door Topsider Tool Box by UWS <sup>®1</sup>	Gloss Black <sup>5</sup>	7.8 cu. ft.	60" L x 13.63" W x 17" H	19370590	\$757
		Bright Chrome <sup>5</sup>	9.4 cu. ft.	72" L x 13.63" W x 17" H	19370591	\$891
8	Side Mount Tool Box by UWS <sup>®1</sup>	Bright Chrome	3.0 cu. ft.	48" L x 11.25" W x 11" H	19332287	\$382
			3.7 cu. ft.	60" L x 11.25" W x 11" H	19332288	\$401
9	Rhino Linings <sup>®</sup> Steel Tool Box by LUND <sup>®2</sup>	Steel with Rhino Linings <sup>®</sup> Coating	10.5 cu. ft.	70" L x 22" W x 17" H	19329842	\$829
10	Swing-Out Tool Box by UnderCover <sup>™3</sup>	Black, Driver-Side	1.5 cu. ft.	28" L x 15" W x 13" H	19417390	\$219
		Black, Passenger-Side <sup>5</sup>			19417391	\$219
11	Secure Lock 48-Inch Under Tonneau Chest Box by UWS <sup>®1,5</sup>	Bright Chrome	8.4 cu. ft.	48" L x 24" W x 16.5" H	19417985	\$630
		Matte Black			19417986	\$665

### 2022 COLORADO

	PRODUCT	DESCRIPTION	VOLUME	DIMENSIONS	PART #	MSRP <sup>4</sup>
5	Gullwing Tool Box by UWS <sup>®1</sup>	Bright Chrome	7.6 cu. ft.	60" L x 19.25" W x 13.5" H	19329977	\$516
		Bright Chrome			19329976	\$505
6	Low-Profile Tool Box by UWS <sup>®1</sup>	Bright Chrome	7.2 cu. ft.	60" L x 19.25" W x 13.5" H	19329975	\$606
		Gloss Black <sup>5</sup>			19370587	\$562
7	Single-Door Topsider Tool Box by UWS <sup>®1</sup>	Bright Chrome	9.4 cu. ft.	48" L x 12" W x 16" H	19370588	\$665
		Gloss Black <sup>5</sup>			19370589	\$665
8	Side Mount Tool Box by UWS <sup>®1</sup>	Bright Chrome	3.0 cu. ft.	48" L x 11.25" W x 11" H	19332287	\$382
10	Swing-Out Tool Box by UnderCover <sup>™3</sup>	Black, Driver-Side	1.5 cu. ft.	28" L x 15" W x 13" H	19333228	\$219
		Black, Passenger-Side <sup>5</sup>			19333229	\$219

<sup>1</sup> UWS Non-GM warranty. Limited warranty by UWS<sup>®</sup> 3 years. For more information, contact your dealer. Carrying capacities provided by UWS<sup>®</sup>. <sup>2</sup> LUND Non-GM warranty. Limited warranty by LUND<sup>®</sup> 3 years/36,000 miles (whichever occurs first). For more information, contact your dealer. Carrying capacities provided by LUND<sup>®</sup>. <sup>3</sup> UnderCover Non-GM warranty. Limited warranty by UnderCover<sup>™</sup> 3 years. For more information, contact your dealer. <sup>4</sup> Manufacturer's Suggested Retail Price. Tax and installation extra. See dealer for details. <sup>5</sup> Not pictured. <sup>6</sup> Associated Accessory. Non-GM part. Pictured gear and supplies not included. See dealer for details.

## UTILITY RACKS



## TOP-NOTCH UTILITY.

Enhance the cargo management versatility of your vehicle with a wide range of Utility Rack choices from Chevrolet Accessories. They're available for a variety of uses and in different load capacities.

1

250<sup>-LB.</sup>  
LOAD CAPACITY<sup>1</sup>



2

500<sup>-LB.</sup>  
LOAD CAPACITY<sup>1</sup>



3

250<sup>-LB.</sup>  
LOAD CAPACITY<sup>1</sup>



4



5



6

### 1. Hornet Light Bar from Putco<sup>®2</sup>

Add extra visibility to your vehicle while on the job. The perfect partner for your BACKRACK<sup>™3</sup> Original Style Rack or Safety Rack, this LED light bar is available in a 16- or 24-inch size. No-drill mount with plug-in wire harness.

### 2. Steel Half Ladder Utility Rack by Thule<sup>®1,4</sup>

Carrying ladders is more convenient with this Half Ladder Rack. It features durable black powder coated finish and 250-lb. load capacity.

### 3. Complete Utility Rack System – Two Crossbars by Thule<sup>®1,4</sup>

This aerodynamic aluminum system weighs a mere 55 lbs. and includes a tool box mount kit.

### 4. Cantilever Cab-Over Extension by Thule<sup>®1,4</sup>

Help protect your cab from long loads with this Cantilever Cab-Over Extension. It adds 32 inches of load support.

### 5. Original Style Rack by BACKRACK<sup>™3</sup>

Maintain your truck's stylish good looks while securely carrying ladders and long loads. A low-profile design allows you to park your truck in places you couldn't with a full-size ladder rack. Requires available hardware kit for compatibility with tonneau covers, tool boxes and light bars (sold separately).

### 6. Safety Rack by BACKRACK<sup>™3</sup>

Help prevent bed items from sliding into the cab window by providing complete coverage of the rear window. It also offers rearward visibility through the 2-inch, fully welded wire screen. Requires available hardware kit for compatibility with tonneau covers, tool boxes and light bars (sold separately).

### 7. GEARON<sup>™</sup> Utility Rack Package<sup>6</sup>

Enhance cargo bed versatility with this customizable Utility Rack Package. Stanchions allow the positions of equipment, such as ladders over the cab, while cross rails can be installed to accommodate two-tier cargo bed loading. Package components (stanchions, cross rails and cargo tie-down rings) are sold separately.

### 2022 SILVERADO 1500 AND 2022 SILVERADO HD

	PRODUCT	MATERIAL	COLOR	PART #	MRSP <sup>5</sup>
1	Hornet 16-Inch Amber LED Light Bar from Putco <sup>®2,8</sup>	–	–	19421081	\$360.99
	Hornet 24-Inch Amber LED Light Bar from Putco <sup>®2</sup>	–	–	19421082	\$468.99
2	Steel Half Ladder Utility Rack by Thule <sup>®1,4</sup>	Heavy-Duty 14-Gauge Welded Steel Construction	Black	19299111	\$329.95
3	Complete Utility Rack System – Two Crossbars by Thule <sup>®1,4</sup>	Powder Coated Aluminum	Silver	19371248	\$799.95
4	Cantilever Cab-Over Extension by Thule <sup>®1,4</sup>	Powder Coated Aluminum	Silver	19371246	\$429.95
7	GearOn <sup>™</sup> Utility Rack Stanchions <sup>6</sup>	Powder Coated Aluminum	Black	84065985	\$750
	GearOn <sup>™</sup> Tiered Storage Cross Rails <sup>6</sup>	Powder Coated Aluminum	Black	84065979	\$395
	Cargo Tie-Down Rings <sup>6</sup>	Powder Coated Steel	Black	23146899	\$105

### 2022 SILVERADO 1500 EXCLUSIVELY

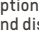
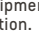

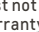
	PRODUCT	MATERIAL	COLOR	PART #	MRSP <sup>5</sup>
5	Original Style Rack by BACKRACK <sup>™3</sup> ; Hardware Kit Required	Steel	Black	19417978	\$216
	Standard No-Drill Hardware Kit by BACKRACK <sup>™6</sup>	–	–	19417980	\$126
6	Safety Rack by BACKRACK <sup>™3</sup> ; Hardware Kit Required	Steel	Black	19417979	\$282
	Standard No-Drill Hardware Kit by BACKRACK <sup>™6</sup>	–	–	19417980	\$126

### 2022 SILVERADO HD EXCLUSIVELY

	PRODUCT	MATERIAL	COLOR	PART #	MRSP <sup>5</sup>
5	Original Style Rack by BACKRACK <sup>™3</sup> ; Hardware Kit Required	Steel	Black	19419336	\$216
	Standard No-Drill Hardware Kit by BACKRACK <sup>™6</sup>	–	–	19419338	\$126
6	Safety Rack by BACKRACK <sup>™3</sup> ; Hardware Kit Required	Steel	Black	19419335	\$282

### 2022 COLORADO

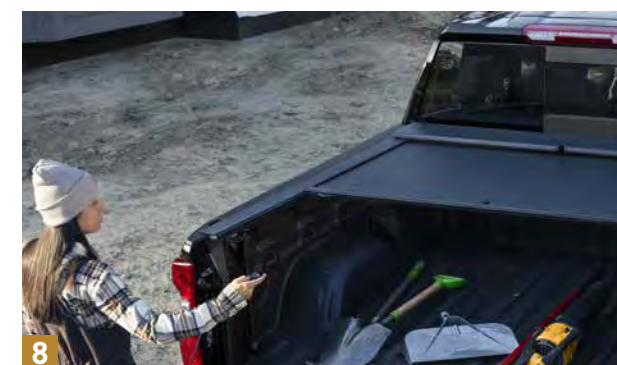
	PRODUCT	MATERIAL	COLOR	PART #	MRSP <sup>5</sup>
2	Steel Half Ladder Utility Rack by Thule <sup>®1,4</sup>	Heavy-Duty 14-Gauge Welded Steel Construction	Black	19299111	\$329.95
3	Complete Utility Rack System – Two Crossbars by Thule <sup>®1,4</sup>	Powder Coated Aluminum	Silver	19371248	\$799.95
4	Cantilever Cab-Over Extension by Thule <sup>®1,4</sup>	Powder Coated Aluminum	Silver	19371246	\$429.95
5	Original Style Rack by BACKRACK <sup>™3</sup> ; Hardware Kit Required	Steel	Black	19368527	\$216
	Standard No-Drill Hardware Kit by BACKRACK <sup>™6</sup>	–	–	19368532	\$126
6	Safety Rack by BACKRACK <sup>™3</sup> ; Hardware Kit Required	Steel	Black	19368530	\$282
	Standard No-Drill Hardware Kit by BACKRACK <sup>™6</sup>	–	–	19368532	\$126
7	GearOn <sup>™</sup> Utility Rack Stanchions <sup>6</sup>	Powder Coated Aluminum	Black	23144878	\$695
	GearOn <sup>™</sup> Cross Rails <sup>6</sup>	Powder Coated Aluminum	Black	22950523	\$300
	GearOn <sup>™</sup> Cargo Tie-Down Rings <sup>6</sup>	Powder Coated Aluminum	Black	23143241	\$105

<sup>1</sup> Rated rack capacity provided by Thule<sup>®</sup>. Maximum payload capacity of vehicle includes weight of driver, passengers, optional equipment and cargo. Must not exceed vehicle and bed cargo capacity. Cargo and load capacity limited by weight and distribution. <sup>2</sup>  Non-GM warranty. Limited warranty by Putco<sup>®</sup>, 3 years/36,000 miles (whichever occurs first). For more information, contact your dealer. <sup>3</sup>  Non-GM warranty. Limited warranty by Thule<sup>®</sup>, 3 years/36,000 miles (whichever occurs first). For more information, contact your dealer. <sup>4</sup>  Non-GM warranty. Lifetime limited warranty by Thule<sup>®</sup>. For more information, contact your dealer. <sup>5</sup> Manufacturer's Suggested Retail Price. Tax and installation extra. See dealer for details. <sup>6</sup> Not pictured.  – Associated Accessory. Non-GM part. Pictured gear and supplies not included. See dealer for details.

## HARD TONNEAU COVERS

# WORK HARDER.

Protect items in your truck bed from the elements and prying eyes with a Chevrolet Accessories Hard Tonneau Cover. Available in multiple configurations, these covers provide quick, convenient access to the truck bed. Some even include cargo lamps and can be operated with the push of a button.



### 2022 SILVERADO 1500

	PRODUCT	BED SIZE	COLOR	PART #	MSRP <sup>1</sup>
1	Embark Power LS Retractable by ReTrax from Advantage <sup>2</sup>	Short	Black	19419848	\$2,699
		Standard		19419849	
2	Embark LS Retractable by ReTrax from Advantage <sup>2</sup>	Short	Black	19419842	\$1,929
		Standard		19419843	
		Long		19419844	
3	Hard Rolling Cover by REV <sup>3</sup>	Short	Black	19416967	\$1,079
		Long		19416968	
4	Hard Folding Cover by REV <sup>3</sup>	Short	Black	19418277	\$1,079
		Long		19416966	
5	Retractable Cover by Roll-N-Lock <sup>4</sup>	Short	Black	19417403	\$1,449
		Standard		19417404	
6	REV <sup>3</sup> Mega Box Storage Box for REV <sup>3</sup> Tonneau Covers <sup>3,5</sup>	All	Black	19416982	\$449
7	One-Piece Painted Hard Cover by UnderCover <sup>5,6</sup>	Short	Paint to Match	19418032	\$1,150
			Summit White	19418033	
		Standard	Black	19418034	\$1,499
			Silver Ice Metallic	19418112	
8	Tri-Fold Hard Tonneau Cover with Battery-Operated LED Light by UnderCover <sup>7,8</sup>	Short	Black	19431672	\$1,250
			Silver Ice Metallic	19431675	
			Summit White	19431678	
			Red Hot	19431681	
			Iridescent Pearl Tricoat	19431684	
		Standard	Black	19431673	
			Silver Ice Metallic	19431676	
			Summit White	19431679	
			Red Hot	19431682	
			Iridescent Pearl Tricoat	19431685	
9	E-Series Retractable Tonneau Cover by Roll-N-Lock <sup>4</sup>	Short	Black	19419470	\$2,469
		Standard		19419471	

### 2022 SILVERADO HD

	PRODUCT	BED SIZE	COLOR	PART #	MSRP <sup>1</sup>
1	Embark Power LS Retractable by ReTrax from Advantage <sup>2</sup>	Standard	Black	19419850	\$2,699
2	Embark LS Retractable by ReTrax from Advantage <sup>2</sup>	Standard	Black	19419845	\$1,929
				19432559	\$2,059
3	Hard Rolling Cover by REV <sup>3</sup>	Standard	Black	19418642	\$1,079
				19419407	
4	Hard Folding Cover by REV <sup>3</sup>	Standard	Black	19418544	\$1,079
				19419405	
5	Retractable Cover by Roll-N-Lock <sup>4</sup>	Standard	Black	19418825	\$1,449
6	REV <sup>3</sup> Mega Box Storage Box for REV <sup>3</sup> Tonneau Covers <sup>3,5</sup>	All	Black	19416982	\$449
8	Tri-Fold Hard Tonneau Cover with Battery-Operated LED Light by UnderCover <sup>7,8</sup>	Standard	Black	19431674	\$1,250
			Silver Ice Metallic	19431677	
			Summit White	19431680	
			Red Hot	19431683	
9	E-Series Retractable Tonneau Cover by Roll-N-Lock <sup>4</sup>	Standard	Black	19419472	\$2,469

### 2022 COLORADO

	PRODUCT	BED SIZE	COLOR	PART #	MSRP <sup>1</sup>
1	Embark Power LS Retractable by ReTrax from Advantage <sup>2</sup>	Short	Black	19419851	\$2,699
		Long		19419852	
2	Embark LS Retractable by ReTrax from Advantage <sup>2</sup>	Short	Black	19419846	\$1,929
		Long		19419847	
3	Hard Rolling Cover by REV <sup>3</sup>	Short	Black	19333084	\$1,079
		Long		19333085	
4	Hard Folding Cover by REV <sup>3</sup>	Short	Black	19355220	\$1,079
		Long		19355221	
5	Retractable Cover by Roll-N-Lock <sup>4</sup>	Short	Black	19333150	\$1,369
		Long		19333151	
6	REV <sup>3</sup> Mega Box Storage Box for REV <sup>3</sup> Tonneau Covers <sup>3,5</sup>	All	Black	19418240	\$449
7	One-Piece Painted Hard Cover by UnderCover <sup>5,6</sup>	Short	Summit White	19333007	\$1,349
			Black	19333008	
		Long	Satin Steel Gray Metallic	19369191	
			Satin Steel Gray Metallic	19369192	

<sup>1</sup> Manufacturer's Suggested Retail Price. Tax and installation extra. See dealer for details. <sup>2</sup> Non-GM warranty. Limited warranty by Advantage<sup>2</sup>, 5 years. For more information, contact your dealer. <sup>3</sup> Non-GM warranty. Limited warranty by REV<sup>3</sup>, 3 years. For more information, contact your dealer.

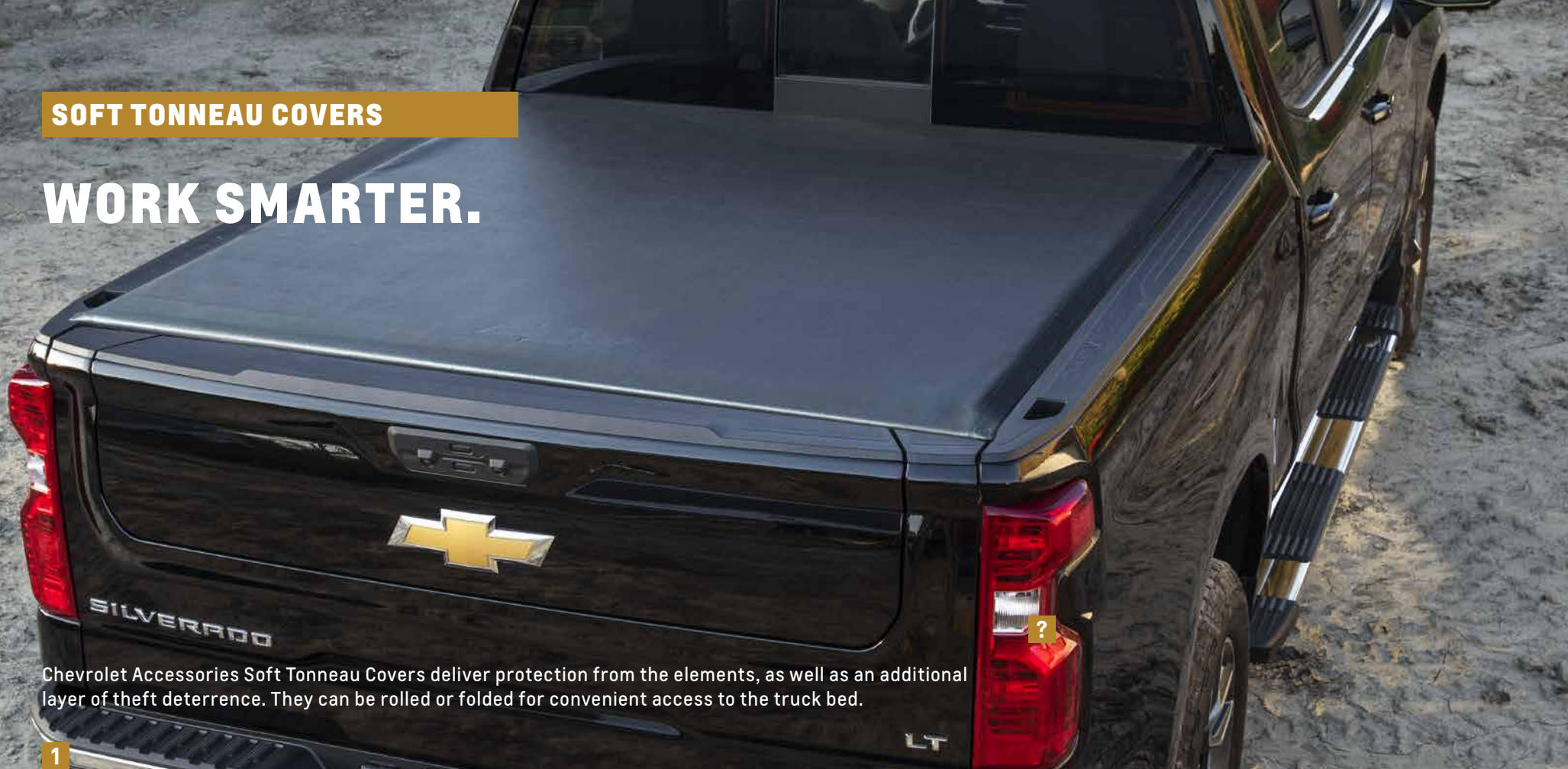
<sup>4</sup> Non-GM warranty. Limited warranty by Roll-N-Lock<sup>4</sup>, 3 years/36,000 miles (whichever occurs first). For more information, contact your dealer.

<sup>5</sup> Not pictured. <sup>6</sup> Non-GM warranty. Limited warranty by UnderCover<sup>5,6</sup>, 3 years. For more information, contact your dealer. <sup>7</sup> - Associated Accessory. Non-GM part. Pictured gear and supplies not included. See dealer for details.



## SOFT TONNEAU COVERS

# WORK SMARTER.



Chevrolet Accessories Soft Tonneau Covers deliver protection from the elements, as well as an additional layer of theft deterrence. They can be rolled or folded for convenient access to the truck bed.

1



2



3

### 2022 SILVERADO 1500

	PRODUCT	BED SIZE	COLOR	PART #	MSRP <sup>1</sup>
1	Soft Roll-Up Tonneau Cover with Bowtie Logo	Short		85120309	\$500
		Standard	Black	85120311	
		Long		85120313	
2	Soft Roll-Up Tonneau Cover by Advantage <sup>®2</sup>	Short		19416979	\$359
		Standard	Black	19416980	
		Long		19416981	
3	Soft Tri-Fold Tonneau Cover by Advantage <sup>®2</sup>	Short		19416976	\$459
		Standard	Black	19416977	
		Long		19416978	

### 2022 SILVERADO HD

	PRODUCT	BED SIZE	COLOR	PART #	MSRP <sup>1</sup>
1	Soft Roll-Up Tonneau Cover with Bowtie Logo	Standard	Black	85120315	\$500
2	Soft Roll-Up Tonneau Cover by Advantage <sup>®2</sup>	Standard	Black	19418547	\$359
3	Soft Tri-Fold Tonneau Cover by Advantage <sup>®2</sup>	Standard	Black	19418643	\$459
		Long		19419403	

### 2022 COLORADO

	PRODUCT	BED SIZE	COLOR	PART #	MSRP <sup>1</sup>
1	Soft Roll-Up Tonneau Cover with Bowtie Logo	Short	Black	22894983	\$495
		Long		22894985	
2	Soft Roll-Up Tonneau Cover by Advantage <sup>®2</sup>	Short	Black	19333152	\$359
		Long		19333153	
3	Soft Tri-Fold Tonneau Cover by Advantage <sup>®2</sup>	Short	Black	19367129	\$459
		Long		19367130	

<sup>1</sup> Manufacturer's Suggested Retail Price. Tax and installation extra. See dealer for details. <sup>2</sup> Non-GM warranty. Limited warranty by Advantage<sup>®</sup>, 5 years. For more information, contact your dealer. - Associated Accessory. Non-GM part. Pictured gear and supplies not included. See dealer for details.

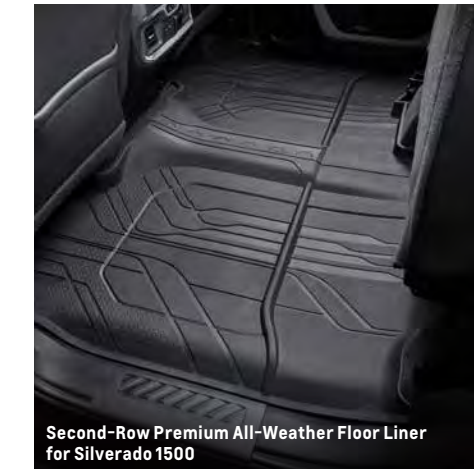
## PREMIUM ALL-WEATHER FLOOR LINERS

# PROTECTION FOR THE DAILY GRIND.

From the brand that knows your vehicle best, these Premium All-Weather Floor Liners have been precision engineered to meet the exact fit and appearance standards of your interior. They feature deep-patterned, molded grooves that help channel debris, snow and water away from your vehicle's carpeting, as well as your feet and clothing.



Premium All-Weather Floor Liners for Colorado



Second-Row Premium All-Weather Floor Liner for Silverado 1500



Second-Row Interlocking Premium All-Weather Floor Liner for Colorado

### 2022 SILVERADO 1500 AND 2022 SILVERADO HD

REGULAR CAB	DOUBLE CAB	CREW CAB	BENCH SEAT	CENTER CONSOLE	POSITION/ SEATING	COLOR	PART #	MSRP <sup>1</sup>
	X	X		X	First-Row	Jet Black with Chevrolet Script	84333602	\$130
	X	X		X		Very Dark Atmosphere with Chevrolet Script	84333603	
	X	X	X			Jet Black with Chevrolet Script (Interlocking)	84333606	
	X	X	X			Very Dark Atmosphere with Chevrolet Script (Interlocking)	84333607	
	X				Second-Row	Jet Black (Interlocking)	84375013	\$90
	X					Very Dark Atmosphere (Interlocking)	84375014	
		X				Jet Black (Interlocking)	84333635	
		X				Very Dark Atmosphere (Interlocking)	84333636	
X					First-Row	Jet Black with Chevrolet Script (w/o Center Console)	84418533	\$130
X						Very Dark Atmosphere with Chevrolet Script (w/o Center Console)	84418534	
	X	X		X		Very Dark Atmosphere with Chrome Z71 <sup>®</sup> Logo	84348119	
	X	X	X	X		Jet Black with Chrome Z71 <sup>®</sup> Logo	84348118	
	X	X	X			Jet Black with Chrome Z71 <sup>®</sup> Logo (Interlocking)	84348123	\$150
	X	X	X			Very Dark Atmosphere with Chrome Z71 <sup>®</sup> Logo (Interlocking)	84348124	
	X				Second-Row	Jet Black (Interlocking)	84348201	\$90
	X					Very Dark Atmosphere (Interlocking)	84348202	
		X				Jet Black (Interlocking)	84348198	
		X				Very Dark Atmosphere (Interlocking)	84348199	

### 2022 COLORADO

EXTENDED CAB	CREW CAB	POSITION/ SEATING	COLOR	PART #	MSRP <sup>1</sup>
X	X	First-Row	Jet Black with Satin Chrome Bowtie Logo	84708367	\$185
X	X		Jet Black with Bowtie Logo	84708369	\$130
	X	Second-Row	Jet Black (Interlocking)	84708335	\$80
X			Jet Black (Interlocking)	84708341	\$80

<sup>1</sup> Manufacturer's Suggested Retail Price. Tax and installation extra. See dealer for details.



# IN-THE-FIELD FUNCTIONALITY.

Maximize your truck bed's cargo-carrying capability with a host of products that manage it, organize it and secure it.

1



2



3



4



5



6



7

**1. Truck Bed Storage System by DECKED<sup>®1</sup>**  
This innovative, weatherproof storage solution offers smooth-rolling and secure drawers with customizable storage options.

**2. Truck Bed Sliding Drawer by BEDSLIDE<sup>®2</sup>**  
Roll the payload out of the tailgate and into easy reach with the pull of the locking handle.

**3. Bed Cargo Net by LoadTamer<sup>™3</sup>**  
Designed to securely handle many load shapes and sizes, this Cargo Net cinches tight to conform snugly to cargo.

**4. Bed Divider Net by LoadTamer<sup>™3</sup>**  
Designed to handle smaller cargo items and to better organize cargo space, the LoadTamer<sup>™</sup> Bed Divider Net is a great solution for loose and miscellaneous cargo items. Configuration is unique to your bed size. See your dealer for details.

**5. Bed Horizontal Cargo Net by Chevrolet Accessories**  
Incorporates stretch shock cords that radiate from a stainless steel ring to provide strength at the center of the load.

**6. Side-Mounted Bed Storage Box (Driver- and Passenger-Side)**  
Keep your tools and supplies secured, organized and handy with this Storage Box that anchors securely to the cargo bedside, over the wheelhousing.

## 2022 SILVERADO 1500

	PRODUCT	BED SIZE	PART #	MSRP <sup>5</sup>
1	Truck Bed Storage System by DECKED <sup>®1</sup>	Short	19421491	\$1,499.99
		Long	19421492	
2	Truck Bed Sliding Drawer 1000 Classic by BEDSLIDE <sup>®2</sup>	Short	19417016	\$1,625
		Long	19417018	
3	Truck Bed Sliding Drawer 1500 Contractor by BEDSLIDE <sup>®2</sup>	Standard	19418845	\$1,865
		Long	19420924	
4	Bed Cargo Net by LoadTamer <sup>™3</sup>	Standard	19367357	\$199
		Long	19367358	\$249
5	Bed Divider Net by LoadTamer <sup>™3</sup>	All	19419331	\$80
		All	12343606	\$60
6	Side-Mounted Bed Storage Box Kit	Short	84705350	\$1,195
		Standard	84705353	
7	Bed Extender by LUND <sup>®4</sup> in Silver <sup>9</sup>	All	19417395	\$299
		All	19417394	

## 7. Bed Extender by LUND<sup>®4</sup>

Includes flip-in, flip-out functionality that secures cargo in the extended position or contains small items inside the bed with the tailgate up.

<sup>1</sup> Non-GM warranty. Limited warranty by DECKED<sup>®</sup>, 3 years. For more information, contact your dealer. Payload capacities provided by DECKED<sup>®</sup>. <sup>2</sup> Non-GM warranty. Limited warranty by BEDSLIDE<sup>®</sup>, 3 years/36,000 miles (whichever occurs first). For more information, contact your dealer. <sup>3</sup> Non-GM warranty. Limited warranty by LoadTamer<sup>™</sup>, 3 years. For more information, contact your dealer. <sup>4</sup> Non-GM warranty. Limited warranty by LUND<sup>®</sup>, 3 years/36,000 miles (whichever occurs first). For more information, contact your dealer. Carrying capacities provided by LUND<sup>®</sup>. <sup>5</sup> Manufacturer's Suggested Retail Price. Tax and installation extra. See dealer for details. <sup>6</sup> Not pictured. <sup>7</sup> - Associated Accessory. Non-GM part. Pictured gear and supplies not included. See dealer for details.

## 2022 SILVERADO HD

	PRODUCT	BED SIZE	PART #	MSRP <sup>5</sup>
1	Truck Bed Storage System by DECKED <sup>®1</sup>	Standard	19421493	\$1,499.99
		Long	19421495	
2	Truck Bed Sliding Drawer 1000 Classic by BEDSLIDE <sup>®2</sup>	Standard	19417017	\$1,625
		Long	19417018	
3	Truck Bed Sliding Drawer 1500 Contractor by BEDSLIDE <sup>®2</sup>	Standard	19418845	\$1,865
		Long	19420924	
4	Bed Cargo Net by LoadTamer <sup>™3</sup>	Standard	19367357	\$199
		Long	19367358	\$249
5	Bed Divider Net by LoadTamer <sup>™3</sup>	All	19419331	\$80
		All	12343606	\$60
6	Side-Mounted Bed Storage Box Kit	Standard	84705353	\$1,195
		All	19417395	
7	Bed Extender by LUND <sup>®4</sup> in Silver <sup>9</sup>	All	19417395	\$299
		All	19417394	

## 2022 COLORADO

	PRODUCT	BED SIZE	PART #	MSRP <sup>5</sup>
1	Truck Bed Storage System by DECKED <sup>®1</sup>	Short	19421488	\$1,499.99
		Long	19421490	
2	Truck Bed Sliding Drawer 1000 Classic by BEDSLIDE <sup>®2</sup>	Short	19367634	\$1,510
		Long	19367635	
3	Bed Cargo Net by LoadTamer <sup>™3</sup>	Long	19367357	\$199
		All	19352884	\$299
7	Bed Extender by LUND <sup>®4</sup> in Black	All	19330176	\$299

## BED PROTECTION

# FLEX AND FUNCTION.

You work hard and so does your truck bed. Protect it with bed protection products from Chevrolet Accessories that deliver added convenience.



### 1. Bedliner with Bowtie Logo

Skid-resistant material minimizes load shifting while integrated side pockets store smaller cargo.

### 2. Bed Mat in Black with Bowtie Logo

Fully ribbed construction helps protect cargo and the truck bed, simplifies cleaning and withstands extreme temperatures.

### 3. Bed Rug with Bowtie Logo

The durable, carpet-like material is water- and stain-resistant.

### 4. Bed Mat by BedRug™<sup>1,3</sup>

The Bed Mat conforms to the bed's contours for optimal fit and protection.

### 5. Tailgate Gap Cover

Keeps debris out of the hinge area when the tailgate is down.

### 6. Carpeted Bedliner by BedRug™<sup>1,3</sup>

Available for Colorado, this Bedliner features molded backing that helps protect the bed from scratches.

### 2022 SILVERADO 1500

	PRODUCT	BED SIZE	PART #	MSRP <sup>2</sup>
1	Bedliner with Bowtie Logo	Short	84648940	\$395
		Standard	84648941	
		Long	84648942	
2	Bed Mat in Black with Bowtie Logo	Short	84050996	\$195
		Standard	84050997	
		Long	84050998	
3	Bed Rug with Bowtie Logo	Short	84655118	\$595
		Standard	84546138	\$595
		Long	84655122	\$600
4	Bed Mat by BedRug™	Short	19417380	\$209
		Standard	19417381	
		Long	19417382	
5	Tailgate Gap Cover	All	84184471	\$65

### 2022 SILVERADO HD

	PRODUCT	BED SIZE	PART #	MSRP <sup>2</sup>
2	Bed Mat in Black with Bowtie Logo	Standard	84634077	\$195
		Long	84634078	
4	Bed Mat by BedRug™	Standard	19418543	\$209
		Long	19419462	
5	Tailgate Gap Cover	All	84184471	\$65

### 2022 COLORADO

	PRODUCT	BED SIZE	PART #	MSRP <sup>2</sup>
1	Bedliner with Bowtie Logo	Short	23258994	\$350
		Long	23258995	
2	Bed Mat in Black with Bowtie Logo	Short	22909436	\$195
		Long	22909435	
6	Carpeted Bedliner by BedRug™ <sup>1,3</sup>	Short	19333198	\$429
		Long	19333199	

<sup>1</sup> ⚠️ Non-GM warranty. Limited warranty by BedRug™, 3 years/36,000 miles (whichever occurs first). For more information, contact your dealer. <sup>2</sup> Manufacturer's Suggested Retail Price. Tax and installation extra. See dealer for details. <sup>3</sup> Not pictured. ⚠️ - Associated Accessory. Non-GM part. Pictured gear and supplies not included. See dealer for details.

## ADDITIONAL ACCESSORIES

# ALWAYS CLOCKED IN.

Give your work truck a bolder, more powerful look with a purpose: added protection and convenience.



### 1. Aeroskin II Hood Protector by LUND®<sup>1</sup>

Help protect your truck's hood from road debris with this Hood Protector. It's custom-fit for your vehicle, providing an aerodynamic appearance.

### 2. Hood Protector by EGR®<sup>2</sup>

This Hood Protector helps shield your truck's hood from road debris.

### 3. Door Moldings by EGR®<sup>2</sup>

Help protect your vehicle from parking lot dings and dents with Door Moldings for the front and rear. Bolt-On Style Moldings also available.

### 4. Front and Rear Splash Guards

Defend your vehicle from tire splash and mud with Front and Rear Splash Guards. They are sold in sets of two for the front or rear wheels.

### 5. Fender Flare Set by EGR®<sup>2</sup>

Add an aggressive, rugged appearance while helping to minimize damage to your vehicle with a Fender Flare Set. They are made of OEM-grade, UV-resistant material.

### 6. Keyless Entry Keypad

Lock and unlock your vehicle without using your key or key fob with a Keyless Entry Keypad.

### 7. In-Channel Window Deflectors by EGR®<sup>2,4</sup>

Help let fresh air in the cab and keep rain, sleet and snow out with Window Deflectors.

### 8. Tape-On Window Deflectors by EGR®<sup>2</sup>

Outfit your vehicle with Front and Rear Tape-On Window Deflectors.

## 2022 SILVERADO 1500

	PRODUCT	CAB TYPE	COLOR	PART #	MSRP <sup>3</sup>
1	Aeroskin Hood Protector by LUND <sup>1,4</sup>	N/A	Matte Black	19417397	\$119
			Smoke	19417396	\$109
			Chrome	19417398	\$179
	Aeroskin II Hood Protector by LUND <sup>1,4</sup>	N/A	Textured Black	19417399	\$129
2	Hood Protector by EGR <sup>2</sup>	N/A	Dark Smoke	19417467	\$99
			Matte Black	19417468	\$109
3	Front and Rear Door Moldings by EGR <sup>2</sup>	Double	Bolt-On Look	19418821	\$229
			Rugged Look	19418823	\$199
			Crew	Bolt-On Look	19418822
			Rugged Look	19418824	\$199
4	Front Splash Guards (Qty. 2)	All	Black	84649174	\$60
	Rear Splash Guards w/Bowtie Logo (Qty. 2)	All	Black	84109906	
5	Fender Flare Set by EGR <sup>2,4</sup>	All	Bolt-On Look	19417483	\$499
		Crew	Rugged Look	19417482	\$449
6	Keyless Entry Keypad	All	Black	84945062	\$145
7	In-Channel Window Deflectors by EGR <sup>2,4</sup>	Regular	Dark Smoke	19417476	\$69
			Matte Black	19417477	\$79
			Dark Smoke	19417478	\$79
		Double	Matte Black	19417479	\$99
			Dark Smoke	19417480	\$89
			Matte Black	19417481	\$109
8	Tape-On Window Deflectors by EGR <sup>2</sup>	Regular	19417473	\$69	
		Double	19417474	\$79	
		Crew	19417475	\$89	

## 9. Low-Profile Tape-On Window Deflectors by LUND®<sup>1,4</sup>

Available in a Textured Black finish, these Tape-On Weather Deflectors feature a low-profile design.

## 2022 SILVERADO HD

	PRODUCT	CAB TYPE	COLOR	PART #	MSRP <sup>3</sup>
1	Aeroskin II Hood Protector by LUND <sup>1,4</sup>	N/A	Smoke	19418523	\$109
			Chrome	19418524	\$179
3	Bolt-On Style Bodyside Molding by EGR <sup>2,4</sup>	Crew	Bolt-On Look	19418822	\$229
			Rugged Look	19418824	\$199
4	Front Splash Guards (Qty. 2)	All	Black	84254758	\$60
	Rear Splash Guards w/Bowtie Logo (Qty. 2)	All	Black	84254760	
5	Fender Flare Set by EGR <sup>2</sup>	All	Bolt-On Look	19419387	\$499
6	Keyless Entry Keypad	All	Black	85539969	\$145
9	Low-Profile Tape-On Window Deflectors by LUND <sup>1,4</sup>	Crew	Matte Black	19417401	\$99
			Smoke	19417400	\$89
			Textured Black	19417402	\$109

## 2022 COLORADO

	PRODUCT	CAB TYPE	COLOR	PART #	MSRP <sup>3</sup>
4	Front Splash Guards (Qty. 2)	All	Black	22958431	\$55
	Rear Splash Guards w/Bowtie Logo (Qty. 2)	All	Black	23278169	
6	Keyless Entry Keypad	All	Black	85540054	\$145
9	Low-Profile Tape-On Window Deflectors by LUND <sup>1,4</sup>	Crew	Textured Black	19367038	\$99
10	Crew Cab Front and Rear Tape-On Window Weather Deflectors <sup>4</sup>	Crew	Smoke Black	23334324	\$125

<sup>1</sup> LUND Non-GM warranty. Limited warranty by LUND<sup>1</sup>; 3 years/36,000 miles (whichever occurs first). For more information, contact your dealer. <sup>2</sup> EGR Non-GM warranty. Limited warranty by EGR<sup>2</sup>; 3 years/36,000 miles (whichever occurs first). For more information, contact your dealer. <sup>3</sup> Manufacturer's Suggested Retail Price. Tax and installation extra. See dealer for details. <sup>4</sup> Not pictured. <sup>5</sup> - Associated Accessory. Non-GM part. Pictured gear and supplies not included. See dealer for details.

## ADDITIONAL ACCESSORIES

# TOOLS FOR YOUR TRADE.

Whether you're looking to enhance your vehicle's storage, upgrade your listening experience or simply want more convenience and peace of mind, Chevrolet Accessories has what you need.



### 1. Under Rear Seat Lockbox by Tuffy Security Products<sup>®1</sup>

This discreet, high-security lockbox mounts under the rear seat of Crew Cab models, providing lockable storage. It features a 3-digit combination for keyless entry and marine-grade carpet lining.

### 2. Console-Mounted Safe

Store smaller items more securely in your vehicle with the Console-Mounted Safe. It mounts securely inside the center console and features a 4-digit combination lock.

### 3. Rear Bench Seat Cover by ARIES<sup>™2</sup>

Help protect your vehicle's rear bench seat from dirt and mud with a Rear Bench Seat Cover.

#### 2022 SILVERADO 1500 AND 2022 SILVERADO HD

	PRODUCT	COLOR	PART #	MSRP <sup>3</sup>
1	Under Rear Seat Lockbox with 3-Digit Combination Locks and Marine-Grade Carpet by Tuffy <sup>®1</sup>	Black	19417361	\$579
2	Console-Mounted Safe	Black	84867168	\$265
3	Rear Bench Seat Cover by ARIES <sup>™2</sup>	Black	19367173	\$120
		Gray	19367174	
		Brown	19367175	

#### 2022 COLORADO

	PRODUCT	COLOR	PART #	MSRP <sup>3</sup>
1	Under Rear Seat Lockbox with 3-Digit Combination Locks and Marine-Grade Carpet by Tuffy <sup>®1</sup>	Black	19418151	\$579
3	Rear Bench Seat Cover by ARIES <sup>™2</sup>	Black	19354226	\$80
		Gray	19354227	
		Brown	19354228	

### 4. Powered Coolers and Patrol Ice Chests by Dometic<sup>4</sup>

Keep food and drinks cool on the go. With access to a power source, these coolers provide a perfect refrigerated solution when you plan your extended getaway. The ice chests' one-piece, rotomolded polyethylene design makes it durable for years of outdoor adventure.

	PRODUCT	PART #	MSRP <sup>1</sup>
4	CFX3-25 Powered Cooler by Dometic <sup>4,5</sup>	19432145	\$839.99
	CFX3-35 Powered Cooler by Dometic <sup>4,5</sup>	19432146	\$899.99
	CFX3-45 Powered Cooler by Dometic <sup>4,5</sup>	19432147	\$959.99
	CFX3-55IM Powered Cooler IM by Dometic <sup>4,5</sup>	19432148	\$1,099.99
	CFX3-75DZ Powered Cooler Dual Zone by Dometic <sup>4,5</sup>	19432149	\$1,299.99
	CFX3-95DZ Powered Cooler Dual Zone by Dometic <sup>4,5</sup>	19432150	\$1,499.99
	CFX3-100 Powered Cooler by Dometic <sup>4,5</sup>	19432151	\$1,399.99
	Patrol 55 Quart Cooler in Ocean Blue by Dometic <sup>4</sup>	19432609	COMING SOON \$299.99
	Patrol 35 Quart Cooler in White by Dometic <sup>4,5</sup>	19432604	COMING SOON \$239.99
	Patrol 55 Quart Cooler in White by Dometic <sup>4,5</sup>	19432605	COMING SOON \$299.99
	Patrol 75 Quart Cooler in White by Dometic <sup>4,5</sup>	19432606	COMING SOON \$359.99
	Patrol 105 Quart Cooler in White by Dometic <sup>4,5</sup>	19432607	COMING SOON \$419.99
Patrol 35 Quart Cooler in Ocean Blue by Dometic <sup>4,5</sup>	19432608	COMING SOON \$239.99	

### 5. Audio Upgrades by KICKER<sup>®6</sup>

Amp up your vehicle's sound system with a Subwoofer Kit. It adds big-bass sound and features a quick-connect wire harness to easily secure or remove when more cargo room is needed. Cosmetically integrated for original factory look, this kit includes a 200-watt-powered KICKER<sup>®</sup> subwoofer, wiring harness, all installation hardware and installation instructions.

	PART NAME	DESCRIPTION	PART #	MSRP <sup>3</sup>
5	Audio Upgrades by KICKER <sup>®5</sup>	200-Watt Subwoofer Only for All Radios	19417164	\$749

### 6. Battery Boosters From NOCO<sup>®7</sup>

These portable lithium-ion battery jump starter packs feature patented safety technology that provides spark-proof connections and reverse polarity protection, making them safe and easy for anyone to use. They can double as a portable power source for recharging USB devices, including smartphones and tablets.

	MODEL	AMPS	JUMP STARTS PER CHARGE	LED FLASHLIGHT (LUMENS)	ENGINE APPLICATION (UP TO)	12-VOLT POWERING	PART #	MSRP <sup>3</sup>
6	GB40	1,000	20	100	6L Gas or 3L Diesel	No	19366935	\$109.95
	GB70	2,000	40	400	8L Gas or 6L Diesel	Yes	19366934	\$215.95
	GB150	3,000	80	500	9L Gas or 7L Diesel	Yes	19366933	\$325.95

<sup>1</sup> Non-GM warranty. Lifetime limited warranty by Tuffy Security Products<sup>®</sup>. For more information, contact your dealer.

<sup>2</sup> Non-GM warranty. Lifetime limited warranty by ARIES<sup>™</sup>. For more information, contact your dealer. <sup>3</sup> Manufacturer's Suggested Retail Price. Tax and installation extra. See dealer for details. <sup>4</sup> Non-GM warranty. Limited warranty by Dometic. For more information, contact your dealer. <sup>5</sup> Not pictured. <sup>6</sup> Non-GM warranty. Limited warranty by KICKER<sup>®</sup>. 3 years/36,000 miles (whichever occurs first). For more information, contact your dealer. <sup>7</sup> Non-GM warranty. Limited warranty by NOCO<sup>®</sup>. 3 years/36,000 miles (whichever occurs first). For more information, contact your dealer.

<sup>8</sup> Non-GM warranty. Limited warranty by NOCO<sup>®</sup>. 3 years/36,000 miles (whichever occurs first). For more information, contact your dealer.

<sup>9</sup> Non-GM warranty. Limited warranty by NOCO<sup>®</sup>. 3 years/36,000 miles (whichever occurs first). For more information, contact your dealer.

<sup>10</sup> Non-GM warranty. Limited warranty by NOCO<sup>®</sup>. 3 years/36,000 miles (whichever occurs first). For more information, contact your dealer.

<sup>11</sup> Non-GM warranty. Limited warranty by NOCO<sup>®</sup>. 3 years/36,000 miles (whichever occurs first). For more information, contact your dealer.

<sup>12</sup> Non-GM warranty. Limited warranty by NOCO<sup>®</sup>. 3 years/36,000 miles (whichever occurs first). For more information, contact your dealer.

<sup>13</sup> Non-GM warranty. Limited warranty by NOCO<sup>®</sup>. 3 years/36,000 miles (whichever occurs first). For more information, contact your dealer.

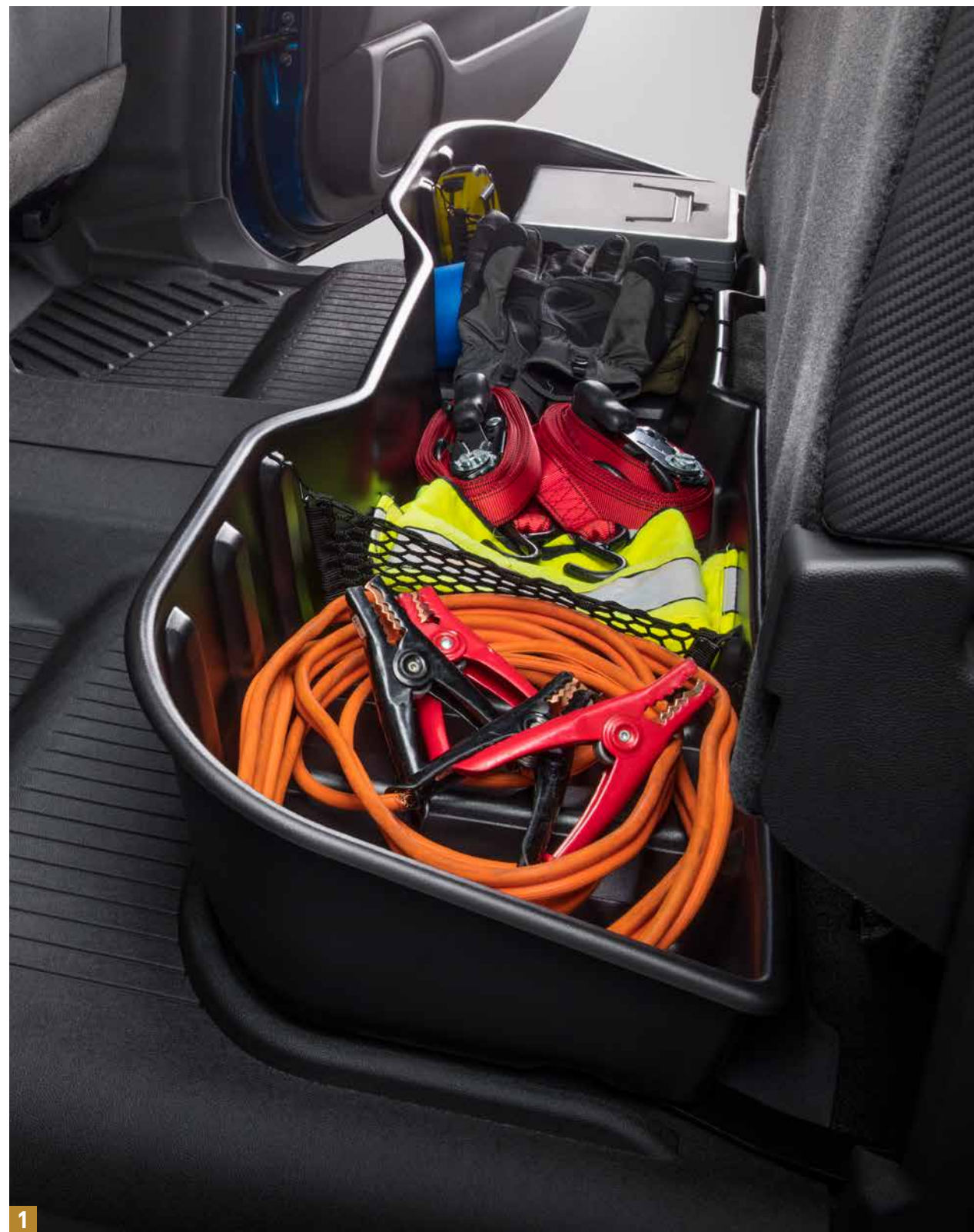
<sup>14</sup> Non-GM warranty. Limited warranty by NOCO<sup>®</sup>. 3 years/36,000 miles (whichever occurs first). For more information, contact your dealer.

<sup>15</sup> Non-GM warranty. Limited warranty by NOCO<sup>®</sup>. 3 years/36,000 miles (whichever occurs first). For more information, contact your dealer.

## SILVERADO CHASSIS CABS

# BIG-TIME HUSTLE.

Silverado Chassis Cabs provide the flexibility and strength to tackle the toughest jobs – and Chevrolet Accessories offers choices to meet all your business needs.



- 1. Underseat Storage Organizer**  
Contain, organize and conceal items under the rear seat in a spacious, secure storage compartment.
- 2. Rear Seat Cover Set (with Armrest)**  
Help protect your Crew Cab seats from dirt and mud with this Rear Seat Cover Set.

- 3. Keyless Entry Keypad**  
Lock and unlock your vehicle without using your key or key fob with a Keyless Entry Keypad.

- 4. Front Center Console Tray Organizer**  
Transform the tall bin in your front center console into a two-tiered storage compartment with a Front Center Console Tray Organizer. It allows the storing of larger items below the organizer and smaller items in the organizer itself.

	PRODUCT	PART #	MSRP <sup>1</sup>
1	Underseat Storage Organizer in Black for Crew Cab	23183674	\$225
2	Rear Seat Cover Set in Black for Crew Cab (with Armrest)	23443852	\$295
3	Keyless Entry Keypad	85540054	\$145
4	Front Center Console Tray Organizer in Black for Crew Cab	22817343	\$50

<sup>1</sup>Manufacturer's Suggested Retail Price. Tax and installation extra. Pictured gear and supplies not included. See dealer for details.



**TO BE ELIGIBLE FOR BUSINESS CHOICE, BUSINESS OWNERS MUST BE ABLE TO ANSWER “YES” TO THE FOLLOWING:**

- ✓ **Yes, I am a business owner, and the vehicle will be used in the day-to-day operation of my business.**
- ✓ **Yes, I can provide one of the following current and active eligible business documents:**
  - / Agricultural ID
  - / Business Tax Forms, Tax Form 1065, Tax Form 1120-S
  - / Commercial Liability Insurance Policy
  - / Crop or Livestock Insurance
  - / Farmers Liability Insurance
  - / Fleet Account Number (FAN)
  - / Municipality or Municipal Business License
  - / Sales Tax License
  - / Schedule C or Schedule F (Farmers Only)
  - / State Business License
  - / State or Federal Authorized Website
  - / Timber Registration Number

**BUSINESS OWNERS:**

ASK ABOUT CHEVROLET ACCESSORIES CASH ALLOWANCES.

**CHEVROLET ACCESSORIES CASH ALLOWANCES FOR YOUR BUSINESS.**

Buying a Chevrolet truck or van for your business? You can put Business Choice to work for you. Business Choice offers cash allowances on commercial-grade Chevrolet Accessories that can help you get the job done. Choose from a list of eligible accessories that includes Trailing Cameras, Premium All-Weather Floor Liners, Assist Steps, Tool Boxes, Bed Protection, Utility Racks, Tonneau Covers and more.

2021-2022 Trucks		
Silverado 1500 and Colorado	<b>\$400</b>	Cash Allowance on eligible Chevrolet Accessories <sup>1,2</sup>
Silverado 2500HD/3500HD	<b>\$1,000</b>	Cash Allowance on eligible Chevrolet Accessories <sup>1,2</sup>

2021-2022 Vans		
Express (Passenger)	<b>\$400</b>	Cash Allowance on eligible Chevrolet Accessories <sup>2</sup>
Express (Cargo)	<b>UP TO \$1,200</b>	Cash Allowance on eligible Chevrolet Accessories <sup>3</sup> Requires a minimum spend of \$500
	<b>UP TO \$1,200</b>	OR Cash Allowance on a combination of eligible Chevrolet Accessories and Upfitter Accessories <sup>3</sup> Requires a minimum spend of \$500

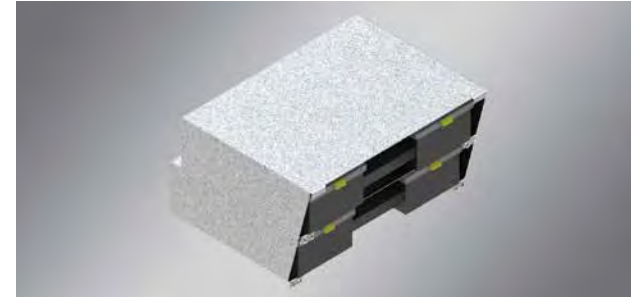
<sup>1</sup> For 2021-2022 Colorado, 2021-2022 Silverado 1500, 2021-2022 Silverado 2500HD/3500HD and 2021-2022 Express Passenger Van; Cash Allowance applies to eligible Chevrolet commercial accessories only. Cash Allowance requires purchase of eligible accessories from a Chevrolet Dealer in an amount equal to or greater than the amount of the Cash Allowance. Not valid with certain other offers. See your Chevrolet Dealer for complete Program requirements. Program is valid January 4, 2022-January 3, 2023. Take delivery by January 3, 2023. <sup>2</sup> Most Chevrolet Parts and Accessories sold and installed on a Chevrolet vehicle by a Chevrolet Dealer or a Chevrolet-approved Accessory Distributor/Installer (ADI) before delivery to the customer are covered under the applicable limited warranty. If Chevrolet Accessories are installed after vehicle delivery, or are replaced under the New Vehicle Limited Warranty, they will be covered, parts and labor, for the longer of the following: a) 12 months/12,000 miles (whichever comes first), or b) the balance of the applicable portion of the New Vehicle Limited Warranty. Chevrolet Parts sold over the counter, or those not requiring installation, will continue to receive the standard Chevrolet Dealer Parts Warranty of 12 months from the date of purchase, parts only, regardless of miles. Chevrolet warranties do not apply to Associated Accessories. See your dealer for details. Vehicles shown with accessories from an independent supplier which are not warranted by GM or its dealers. GM is not responsible for the safety or quality of independent accessories. Any warranty is provided by the accessory manufacturer. <sup>3</sup> For 2021-2022 Express Cargo Van, (i) Cash Allowance may be applied to eligible Chevrolet commercial accessories, a combination of eligible Chevrolet commercial accessories and eligible commercial upfitter additions including labor and installation associated with upfitter additions only, and (ii) Customers must spend at least \$500 to be eligible for Cash Allowance. Not valid with certain other offers. See your Chevrolet Dealer for complete Program requirements. Program is valid January 4, 2022-January 3, 2023. Take delivery by January 3, 2023. Pictured gear and supplies not included. See dealer for details.

**BUSINESS CHOICE**

**BUSINESS CHOICE PACKAGE POSSIBILITIES.**



These possible packages for the Silverado 1500, Silverado HD, Colorado and Express Cargo Van offer a combined cash allowance and flexible solutions for your business.



**POSSIBLE PACKAGE FOR 2022 EXPRESS CARGO VAN**

PART #	ACCESSORY	MSRP <sup>1</sup>
19419014	Trade Package by Westcan <sup>2</sup>	\$1,497
19419007	Driver/Passenger Shelving Units and Perforated Swing Door Partition	\$386
19418274	Garment Locker by Westcan <sup>2</sup>	\$299.99
19419008	Thinkware DC-M1-FG Dash Cam by EchoMaster <sup>3</sup>	\$194
	2-Place In-Shelf Tote Holder by Westcan <sup>2</sup> (includes 2 totes)	\$194
<b>TOTAL</b>		<b>\$2,376.99</b>
<b>Business Choice (Cash Allowance)<sup>4,5</sup></b>		<b>-\$1,200</b>
<b>Total after offers</b>		<b>\$1,176.99</b>



**POSSIBLE PACKAGE FOR 2022 SILVERADO 2500HD AND 3500HD**

PART #	ACCESSORY	MSRP <sup>1</sup>
19419345	Fifth Wheel 30K Hitch by CURT <sup>6</sup> Group <sup>6</sup>	\$1,610
85004154	Auxiliary Accessory Camera	\$475
84388999	Work Step Assist Steps in Black	\$445
<b>TOTAL</b>		<b>\$2,530</b>
<b>Business Choice (Cash Allowance)<sup>4,5</sup></b>		<b>-\$1,000</b>
<b>Total after offers</b>		<b>\$1,530</b>



**POSSIBLE PACKAGE FOR 2022 SILVERADO 2500HD AND 3500HD**

PART #	ACCESSORY	MSRP <sup>1</sup>
19418544	Hard Folding Tonneau Cover by REV <sup>7</sup>	\$1,079
19370811	Mega Box for Hard Folding Tonneau Cover by REV <sup>7</sup>	\$449
19417361	Under Rear Seat Lockbox with 3-Digit Combination Locks by Tuffy <sup>8</sup>	\$579
<b>TOTAL</b>		<b>\$2,107</b>
<b>Business Choice (Cash Allowance)<sup>4,5</sup></b>		<b>-\$1,000</b>
<b>Total after offers</b>		<b>\$1,107</b>



**POSSIBLE PACKAGE FOR 2022 SILVERADO 1500 LIMITED AND NEW 2022 SILVERADO 1500**

PART #	ACCESSORY	MSRP <sup>1</sup>
19371248	Complete Utility Rack System – Two Crossbars by Thule <sup>9</sup>	\$799.95
19370598	Single Lid Crossover Tool Box with Pull Handles by UWS <sup>10</sup> in Matte Black	\$650
84521602	Front and Rear Premium All-Weather Floor Mats	\$160
<b>TOTAL</b>		<b>\$1,609.95</b>
<b>Business Choice (Cash Allowance)<sup>4,5</sup></b>		<b>-\$400</b>
<b>Total after offers</b>		<b>\$1,209.95</b>



**POSSIBLE PACKAGE FOR 2022 COLORADO**

PART #	ACCESSORY	MSRP <sup>1</sup>
19367634	Sliding Tray System by BEDSLIDE <sup>11</sup>	\$1,510
84157153	5-inch Rectangular Assist Steps	\$725
84708367	Front Floor Liners in Jet Black with Satin Chrome Bowtie Logo	\$185
<b>TOTAL</b>		<b>\$2,420</b>
<b>Business Choice (Cash Allowance)<sup>4,5</sup></b>		<b>-\$400</b>
<b>Total after offers</b>		<b>\$2,020</b>

<sup>1</sup> Manufacturer's Suggested Retail Price. Tax and installation extra. See dealer for details. <sup>2</sup> Non-GM warranty. Limited warranty by Westcan, 3 years/36,000 miles (whichever occurs first). For more information, contact your dealer. <sup>3</sup> Non-GM warranty. Limited warranty by EchoMaster, 3 years/36,000 miles (whichever occurs first). For more information, contact your dealer. <sup>4</sup> Most Chevrolet Parts and Accessories sold and installed on a Chevrolet vehicle by a Chevrolet Dealer or a Chevrolet-approved Accessory Distributor/Installer (ADI) before delivery to the customer are covered under the applicable limited warranty. If Chevrolet Accessories are installed after vehicle delivery, or are replaced under the New Vehicle Limited Warranty, they will be covered, parts and labor, for the longer of the following: a) 12 months/12,000 miles (whichever comes first), or b) the balance of the applicable portion of the New Vehicle Limited Warranty. Chevrolet Parts sold over the counter, or those not requiring installation, will continue to receive the standard Chevrolet Dealer Parts Warranty of 12 months from the date of purchase, parts only, regardless of miles. Chevrolet warranties do not apply to Associated Accessories. See your dealer for details. Vehicles shown with accessories from an independent supplier which are not warranted by GM or its dealers. GM is not responsible for the safety or quality of independent accessories. Any warranty is provided by the accessory manufacturer. <sup>5</sup> Chevrolet Accessories Cash Allowance applies to eligible commercial accessories only. BUSINESS CHOICE OFFERS program terms exclude exterior/interior appearance accessories and certain entertainment accessories. Visit gmfleet.com for the list of eligible Chevrolet Accessories Categories. Not valid with other offers. See dealer for details. For 2021-2022 model year vehicles, take delivery by 1/3/2023. Amounts include parts only. Labor and installation charges not included. The 2022 BUSINESS CHOICE OFFERS program is valid from January 4, 2022, through January 3, 2023, for 2021-2022 model year vehicles. You must purchase or lease your vehicle during the program period and be prepared to provide proof of your business. To qualify, vehicle must be used in the day-to-day operation of the business and not solely for personal/non-business-related transportation purposes. This program may not be compatible with other offers or incentive programs. Consult with your Chevrolet Dealer for program compatibility and other restrictions. For complete program requirements, including information regarding offers, vehicles, equipment, options, warranties and ordering information, consult your Chevrolet Dealer or visit gmfleet.com. <sup>6</sup> Non-GM warranty. Limited lifetime warranty by CURT<sup>6</sup> Group. A Series 5th Wheel Hitch, Trailer Hitches and Ball Mounts, Trailer Couplers, Locks, Wiring and Electrical. For more information, contact your dealer. <sup>7</sup> Non-GM warranty. Limited warranty by REV, 3 years/36,000 miles (whichever occurs first). For more information, contact your dealer. <sup>8</sup> Non-GM warranty. Lifetime limited warranty by Tuffy Security Products. For more information, contact your dealer. <sup>9</sup> Non-GM warranty. Lifetime limited warranty by Thule. For more information, contact your dealer. <sup>10</sup> Non-GM warranty. Limited warranty by UWS, 3 years. For more information, contact your dealer. <sup>11</sup> Non-GM warranty. Limited warranty by BEDSLIDE, 3 years/36,000 miles (whichever occurs first). For more information, contact your dealer. - Associated Accessory. Non-GM part. Pictured gear and supplies not included. See dealer for details.





ACCESSORIES